

# ENVIRONMENTAL PERMITTING

Pollution Prevention and Control





## PERMIT REGULATIONS?

# WE CAN HELP.

Our team of environmental consultants boasts extensive regulatory, operational, and industrial expertise, having worked across consultancy, industry, Scottish Environment Protection Agency (SEPA), the Environment Agency and Local Authorities.

Arthian is adept at helping your business to determine the necessary Environmental Permits, assisting in their preparation, variation, application, and facilitating communication with the relevant Environmental Agencies (SEPA/EA/NRW/NIEA) on your behalf. We can also provide permit maintenance services, allowing operators to discharge all of the reporting, monitoring and assessment conditions their permits necessitate.

We excel in crafting a diverse range of Environmental Permits, spanning from straightforward Standard Rule Environmental and PPC Part B Permits to intricate Bespoke Installation Environmental and PPC Part A Permits. Our services encompass the seamless handling of permit applications for new sites, variations to existing permits, permit transfers (full or partial), and the closure or surrender of Environmental Permits.

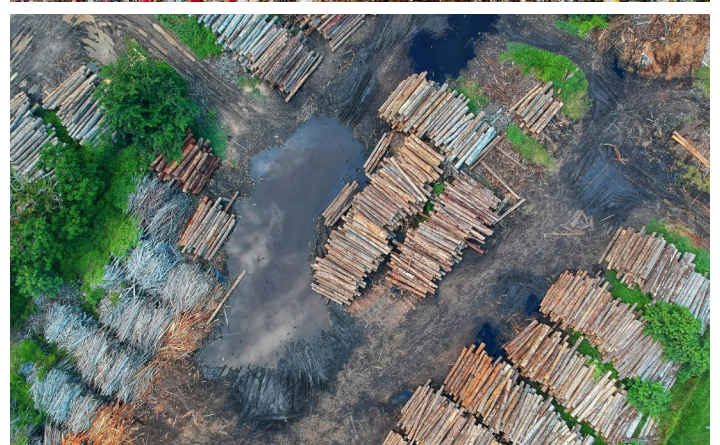
# WHO NEEDS AN ENVIRONMENTAL PERMIT?

In the UK, certain industries that operate specific types of installations that conduct specific activities which breach specific thresholds, are mandated to hold an environmental permit.

The requirements for environmental permits can vary based on the industry and the potential impact on the surrounding environment.

Examples of industries that may necessitate environmental permits and consents include:

- Hydrogen Production
- Energy and utilities companies
- Chemical industry
- Automotive industry
- Metal processing & production
- Mineral industries such as cement, glass, and ceramics
- Waste management activities including landfill, incineration, and waste recovery
- Paper and board production
- Coating, printing, and textiles
- Timber industry
- Food and drink sector
- Intensive Agriculture
- Pharmaceutical production
- Carbon capture and storage







## BEST AVAILABLE TECHNIQUES

Permitted sites need to demonstrate that they are using Best Available Techniques (BAT) to minimise pollution and ensure adverse environmental impacts are avoided.

BAT reference (BREF) and BAT Conclusion (BATC) guidance document are available for each permitted industrial sector. Arthian will their extensive experience to help operators to identify what is BAT for each installation and to navigate a path to cost-effective compliance.

Emissions to all relevant environmental media (air, water, land and noise) that may impact adjacent receptors need to be considered.

# UK REGULATORY REQUIREMENTS FOR ENVIRONMENTAL PERMITS

In the UK, environmental permits are issued and regulated under two main regulatory frameworks: [the Environmental Permitting Regulations \(England and Wales\)](#) and the [Pollution Prevention and Control Regulations \(Scotland and Northern Ireland\)](#).

The environmental permitting regime is intricate, requiring a deep understanding of relevant technical guidance and experience in engaging with regulators. Key aspects of obtaining and maintaining environmental permits include:

## PERMIT LIFECYCLE MANAGEMENT

- Permit Application:** Organisations must apply for an environmental permit before commencing any activity requiring one. This entails providing comprehensive information about the activity, its potential environmental impact, and proposed mitigation measures. The application involves submitting technical data on a prescribed form, along with the requisite fee.
- Permit Issuance:** The permit document includes legally binding conditions that must be followed. Inspections by regulators ensure compliance. Depending on the activity, emissions monitoring and reporting may be required, alongside setting up and maintaining management systems to minimize environmental impact.
- Permit Variation:** Changes in activities or regulations may necessitate permit variations. Operators must notify regulators of proposed changes or updates. Failure to do so may constitute an offence. Ensuring compliance with evolving project requirements is crucial, and we can facilitate necessary permit adjustments.
- Permit Transfer:** Permits can be transferred between operators, necessitating robust Environmental Management Systems and prior application submission.
- Permit Surrender:** Operators can apply to surrender their permits, typically when activities cease or reduce. Certain conditions may apply, such as providing a Site Condition Report to prove minimal environmental impact.
- Ongoing Permit Compliance:** Businesses holding environmental permits must adhere to conditions continuously, including emission limits, waste disposal protocols, monitoring obligations, and pollution prevention measures.

Arthian Consulting offers comprehensive support throughout the environmental permitting process, ensuring compliance and seamless operation within regulatory frameworks.

# TYPES OF PERMITS

There are several types of environmental permits available, depending on the type of activity being carried out and the potential impact on the environment.

Arthian's environmental consultants can aid you with all aspects of your business's environmental permit: pre-application; preparation; application; variation; transfer; and/or surrender and can liaise with the appropriate Regulatory Authorities on your behalf.

Some of the most common types of environmental permits include:

## ENGLAND & WALES

---

**Standard Rules Permits:** These are pre-determined permits designed to be simple and quick to apply for. Standard Rules Permits are available for low-risk activities such as medium combustion plants, small waste operations, storage and handling of non-hazardous materials, and certain types of mobile plant operations. If your business cannot comply with the standard rules or your process takes place in an area which would need further care and consideration, such as near conservation areas, then it may require a bespoke permit.

**Bespoke Installation Permits:** These are permits tailored to the specific requirements of an activity. When a permit does not meet the criteria specified within a Standard Rules Permit, you may require a Bespoke Permit. These are usually required for more complex and high-risk activities such as large-scale industrial processes, waste recovery, transfer, treatment and management facilities, and water abstraction and discharge activities. The extent of the work involved here depends on the complexity of your project.

## PPC SCOTLAND

---

**PPC Part A:** Operators of installations where the highest risk industrial activities are undertaken are required to have a permit under Part A of the regulations. Examples include chemical production facilities, metal processing facilities, and power generation plants.

**PPC Part B:** The regulation of PPC Part B activities focuses on control of emissions to air.

Arthian can offer advice on which environmental permits would best suit your project and prepare the technical information to support your application. We can also liaise with the appropriate Regulatory Authority on your behalf throughout the lifecycle of your permit requirements.

# ARTHIAN IS YOUR PERMITTING ENVIRONMENTAL CONSULTANCY

Arthian's experienced team has extensive environmental permitting experience, serving a diverse range of clients from individuals to large multinational corporations in the private sector and public organizations.

If you're uncertain whether your business requires an environmental permit, contact Arthian today to speak with one of our expert environmental permitting consultants. We can assist you in determining your regulatory requirements and guide you through the process of obtaining and maintaining the necessary permits.

Arthian offers a comprehensive service to manage the application process, from initial pre-application liaison with the relevant Regulatory Authority to the preparation and submission of the application, and handling post-submission queries and discharge of pre-Operational or Improvement Conditions.

## MINIMUM UK ENVIRONMENTAL PERMIT TIMESCALES GUIDANCE

PERMIT TYPE	2 MONTHS	3 MONTHS	4 MONTHS	5 MONTHS
NEW PERMIT				
VARIATION				
STANDARD		IF NO PUBLIC PARTICIPATION IS INVOLVED		
SUBSTANTIAL				
TRANSFERS				
SURRENDER				







## ARTHIAN'S PERMITTING SERVICES

We can provide total project management of the permitting application process or collaborate with other project team members and technical consultants. Additionally, our environmental permitting consultants can support your business with the following services.

- Part A1 Environmental Permits
- Local Authority A2 and Part B Permits
- PPC Part A and Part B permits
- Environmental Risk Assessments
- Best Available Techniques (BAT) Assessments
- Permit maintenance services, including annual reporting and periodic monitoring and assessment
- Permit derogation applications
- Air Quality Modelling and Assessments
- Environmental Management Systems
- Odour Management Plans
- Noise Management Plans
- Dust Management Plans
- Pest Management Plans
- Resource Efficiency Audits (water/ waste/ energy)
- Emission Plans
- Accident Management Plans
- Human Health Risk Assessments
- Site Condition Reports
- Hydrogeological Risk Assessments
- Site Closure Reports
- Commissioning Reports
- Decommissioning Reports
- Phase I and Phase II Ground Investigation and Reporting
- Site Investigation
- Site Integrity Assessment
- Soil & Groundwater Monitoring
- Ambient Air Quality Monitoring
- Stack Emissions Monitoring
- Water Emissions Monitoring
- Odour Monitoring





# COMPLIMENTARY SERVICES

Your trusted partner working collaboratively to deliver client-focused solutions.

## Related services

Asset Management

---

Process Engineering

---

Process Safety

---

Civil & Structural Engineering

---

Geotechnical Engineering

---

Buildings & Blast Resistant  
Structures

---

Storage Tank Laser Scanning &  
Utility Surveys

---

Environmental Risk  
Assessments/CDOIF

---

Occupational Health & Safety

---

Decarbonisation/Net Zero  
Strategies



16 Locations across the UK & Ireland



[www.arthian.com](http://www.arthian.com) [info@arthian.com](mailto:info@arthian.com)